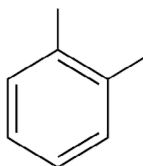


SCI

Safety data sheet

August, 08, 2024
Revision #1



SCI

SCI-4400-FC-B

SECTION 1. IDENTIFICATION

Product identifier	SCI-4400-FC-B
Other Means of Identification	N. A
Recommended Use	Epoxy Crack Filler Fast-Cure
Restrictions on Use	Unknown
Supplier Identifier	SCI COATINGS INC. 2821 Boulevard Le Corbusier Laval, Québec Canada H7L 4J5 www.scicoatings.com
Emergency Phone No.	24-Hour Emergency Telephone Number Canada (CANUTEC): (613) 996-6666

SECTION 2. HAZARD IDENTIFICATION

Classification

Acute Toxicity, Oral (Category 4)
Acute Toxicity, Dermal (Category 4)
Skin Sensitization (Category 1)
Respiratory Sensitization (Category 1)
Skin Corrosion/Irritation (Category 1B)
Serious eye damage/irritation (Category 1)
Reproductive toxicity, Additional category lactation
Reproductive toxicity, fertility (Category 2)
Reproductive toxicity, unborn child (Category 1B)
Specific target organ toxicity - single exposure (Category 3 irritating to respiratory system)
Hazardous to the aquatic environment - acute (Category 1)
Hazardous to the aquatic environment - chronic (Category 1)

Label Elements

Signal Word

Danger

Hazard Statements

H302 Harmful if swallowed
H312 Harmful in contact with skin
H317 May cause an allergic skin reaction
H314 Causes severe skin burns and eye damage
H334 May cause allergy or asthma symptoms or breathing difficulties if inhaled
H335 May cause respiratory irritation
H360 May cause harm to breast-fed children
H361 May damage the unborn child. Suspected of damaging fertility
H400 Very toxic to aquatic life
H410 Very toxic to aquatic life with long lasting effects

Precautionary statements

Prevention:

P201 Obtain special instructions before use. P202 Do not handle until all safety precautions have been read and understood. P260 Do not breathe mist. P263 Avoid contact during pregnancy/while nursing. P264 Wash with plenty of water and soap thoroughly after handling. P270 Do not eat, drink or smoke when using this product. P271 Use only outdoors or in a well-ventilated area. P272 Contaminated work clothing should not be allowed out of the workplace. P273 Avoid release to the environment. P280 Wear protective gloves/protective clothing/eye protection/face protection. P284 Wear respiratory protection. P305 + P351 + P338 IF IN EYES: Rinse cautiously with water for several minutes. Remove contact lenses, if present and easy to do so. Continue rinsing. P310 Immediately call a POISON CENTER or doctor/physician. P303 + P361 + P353 IF ON SKIN (or hair): Take off immediately all contaminated clothing. Rinse skin with water/shower. P304 + P341 + P311 IF INHALED: If breathing is difficult, remove to fresh air and keep at rest in a position comfortable for breathing. Call a POISON CENTER or doctor/physician. P301 + P330 + P331 IF SWALLOWED: Rinse mouth. Do NOT induce vomiting. P362 + P364 Take off contaminated clothing and wash before reuse. P370 + P378 In case of fire: Use water spray, dry powder, or foam for extinction. P233 Keep container tightly closed. P405 Store locked up. P501 Dispose of contents/container into safe container in accordance with local, regional or national regulations.



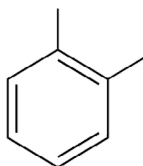
SDS

August 08, 2024
Revision #1

SCI COATINGS • 2821 BOUL. LE CORBUSIER, LAVAL (QC) H7L 4J5

scicoatings.com

page 1 of 5



SCI

SCI-4400-FC-B

Other Hazards:

Unknown

GHS SPECIAL LABELING:

EUH205 - "Contains epoxy constituents. May produce a skin allergy."

SECTION 3. COMPOSITION

Chemical Name	CAS No.	% concentration
Isophorone diamine	2855-13-2	10 - 25%
Benzyl alcohol	100-51-6	1 - 10 %
4-nonylphenol, branched	84852-15-3	10 - 20 %
Polyoxypropylene diamine	9046-10-0	15 - 25 %
Amine curing agent	Mixture	35 - 55 %

SECTION 4. FIRST-AID MEASURES**First-aid Measures****Inhalation:**

IF INHALED: Remove person to fresh air and keep comfortable for breathing.

Skin Contact:

Flush with soap and water for a minimum of 15 minutes. Consult a physician if irritation persists or you feel unwell.

Eye Contact:

Rinse immediately with plenty of water for at least 15 minutes. Consult a physician.

Ingestion:

Rinse mouth and then drink plenty of water. Do not induce vomiting. Never induce vomiting or give anything by mouth if the victim is unconscious or having convulsions. Immediate medical attention required.

Most Important Symptoms and Effects, Acute and Delayed**If inhaled:**

May cause allergy or asthma symptoms or breathing difficulties if inhaled.

If on skin:

Harmful if in contact with the skin. Causes skin irritation. Exposure may produce an allergic reaction

If in eyes:

Causes serious eye damage.

If Ingested:

Ingestion is likely to be harmful or have adverse effects

Immediate Medical Attention and Special Treatment:**Special Instructions:**

If a physician or medical attention is required, have product container or label at hand.

SECTION 5. FIRE-FIGHTING MEASURES**Extinguishing Media****Suitable Extinguishing Media**In case of fire: water fog, foam, dry chemical powder, carbon dioxide (CO₂)**Unsuitable Extinguishing Media**

Water jet

Specific Hazards Arising from the Product

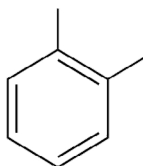
During fire, nitrous gases, fumes/smoke, isocyanates and vapour may be formed.

Special Protective Equipment and Precautions for Fire-fighters

Self-contained breathing apparatus and turn-out gear must be worn in case of fire.

SDSAugust 08, 2024
Revision #1**SCI COATINGS • 2821 BOUL. LE CORBUSIER, LAVAL (QC) H7L 4J5**scicoatings.com

page 2 of 5



SCI

SCI-4400-FC-B

SECTION 6. ACCIDENTAL RELEASE MEASURES

Personal Precautions, Protective Equipment, and Emergency Procedures

Keep unnecessary personnel away. Keep people away from and upwind of spill/leak. Keep upwind. Keep out of low areas. Wear appropriate protective equipment and clothing during clean-up. Do not breathe mist or vapour. Do not touch damaged containers or spilled material unless wearing appropriate protective clothing. Ensure adequate ventilation. Local authorities should be advised if significant spillage cannot be contained. For personal protection, see section 8 of the SDS.

Methods and Materials for Containment and Clean up

Large spills: Stop the flow of material, if this is without risk. Dike the spilled material, where this is possible. Cover with plastic sheet to prevent spreading. Absorb in vermiculite, dry sand or earth and place into containers. Prevent product from entering drains. Prevent entry into waterways, sewer, basements or confined areas. Following product recovery, flush area with water.

Small Spills: Wipe up with absorbent material. Clean surface thoroughly to remove residual contamination. Never return spills to original containers for re-use. For waste disposal, see section 13 of the SDS.

SECTION 7. HANDLING AND STORAGE

Precautions for Safe Handling

Obtain special instructions before use. Do not handle until all safety precautions have been read and understood. Do not breathe dust or mist. Do not get in eyes, on skin, or on clothing. Do not get this material in contact with eyes. Do not taste or swallow. When using, do not eat, drink or smoke. Provide adequate ventilation. Should be handled in closed systems, if possible. Pregnant or breastfeeding women must not handle this product. Wear appropriate personal protective equipment. Wash hands thoroughly after handling. Avoid release to the environment. Observe good industrial hygiene practices. Keep away from sources of ignition -No smoking. Take precautionary measures against static discharge.

Conditions for Safe Storage

Store in cool dry and well-ventilated place. Keep stored in accordance with local, regional, national, and international regulations. Store away from incapable materials.

SECTION 8. EXPOSURE CONTROLS / PERSONAL PROTECTION

Control Parameters

All protective clothing should be appropriately clean and available to dress into before work. The engineering measures or controls and PPE recommendations are only guidelines and may not apply to every situation. Data not available. For additional information, please consult the corresponding requirements under <http://www.ccohs.ca/topics/hazards/chemical/chemicals/>

Appropriate Engineering Controls

Local exhaust ventilation required. Make up air should be supplied to balance air that is removed by local or general exhaust ventilation. Provide sufficient ventilation to keep vapors below permissible exposure limit. Emergency eye wash fountains and safety showers should be available in the immediate vicinity of any potential exposure. Ensure all national / local regulations are observed.

Individual Protection Measures

General Measures

Do not eat, drink or smoke during work. Avoid all contact with skin or eye. If clothing comes into contact with material, do not allow out of the workplace. Clean hands and any exposed skin thoroughly after work and before breaks.

Eye / Face Protection

Use tightly sealed goggles or safety glasses with side shields which are resistant to Chemicals.

Skin Protection

Wear chemical resistant protection gloves. Wear impervious clothing as necessary to protect against coming in contact with product.

Respiratory Protection

If insufficient ventilation, wear respiratory protection.



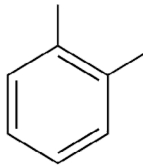
SDS

August 08, 2024
Revision #1

SCI COATINGS • 2821 BOUL. LE CORBUSIER, LAVAL (QC) H7L 4J5

scicoatings.com

page 3 of 5



SCI

SCI-4400-FC-B

SECTION 9. PHYSICAL AND CHEMICAL PROPERTIES

Appearance	ÁÓ^æ ^ Ó^ã ^
Odor	P[Óææææ ^
Odor threshold	P[Óææææ ^
pH	P[Óææææ ^
Melting Point	P[Óææææ ^
Initial Boiling Point / Range	P[Óææææ ^
Flash point	NJHÓ
Evaporation rate	P[Óææææ ^
Flammability (solid; gas)	P[Óææææ ^
Lower flammable/explosive limit	P[Óææææ ^
Upper flammable/explosive limit	P[Óææææ ^
Vapor pressure	P[Óææææ ^
Vapor density	P[Óææææ ^
Specific gravity	FEFG
Solubility	Úæææ
Partition coefficient-n-Octanol/water	P[Óææææ ^
Auto-ignition temperature	P[Óææææ ^
Decomposition temperature	P[Óææææ ^

SECTION 10. STABILITY AND REACTIVITY

Reactivity	P[] È^æææ ^
Chemical stability	Úæææ^Á) á^Á^&[{ { ^} á^á^ææ) áã * Áæ) áÁç :æ ^Á) } áææ) •
Possibility of hazardous reactions	VæÁ :[á ^ &Ó) áÁ [] { ^ íá^Á^ á^á^ áææ) Á) [ç^ Á^ á É
Conditions to avoid	Óç[áÁ^ [] ^æ :^ Á ç&^áá * Áæ) Áæ) ç[á çÓ) [ç^ Á^ á • Á
Incompatible materials	Ud[] * Á çæá á * Áæ^) • Áæ) áÁææ • É
Hazardous decomposition products	W\ \] [,]

SECTION 11. TOXICOLOGY INFORMATION

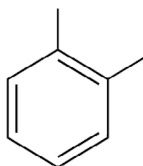
Likely Routes of Administration	Q çæææ) È\ á Á) çæææ^ ^Á) çæææ) * ^ • ç) É
Acute Toxicity	U :æææ) [] ÁÓÍ ÈÁ^Í Á * É * ÁçæD
LD50 and LC50 Data	Ó^ :{ æææ) ~ Á Á) çæææ) áçÁ) ÁÓÍ ÈÁ^Í ÉÁ * É *
Skin Corrosion/Irritation	Óæ • ^ • Á) á Á) áææ) É
Serious Eye Damage/ Irritation	Óæ • ^ • Á) á Á) áææ) æ ^
STOT (Specific Target Organ Toxicity) Single Exposure Inhalation	Á æ Áæ • ^ Áæ^ * Á) Áæ) çææ) [] ç { • Á) Á) áææ) * Áææ) çÁ • Á
Aspiration Hazard	áÁ çææ) É
STOT (Specific Target Organ Toxicity) Repeated Exposure	Ú á È^ ^ Éæ) çææ) Á) ç { • Á^ • ç) ÈÁ^) áææ) í^ Á^ • ç)
Respiratory and/or Skin Sensitization	P[Áæææ
Carcinogenicity	W\ \] [,]
Reproductive Toxicity	P[Óææææ ^
Germ Cell Mutagenicity	P[Óææææ ^
Interactive Effects	P[Óææææ ^

SECTION 12. ECOLOGICAL INFORMATION

V çæææ) Áæ ~ æææ) áÁ) áçææ) ç * Á^ & Ó É

SECTION 13. DISPOSAL CONSIDERATIONS

Disposal Methods
 Óæ) [• ^ Á) Á)] • É) çææ) Á) ç Áæ^ Á) çææ) Á) áææ) íáæ) & Á) áçÁ) çææ) á) çææ) çææ) * ^ |ææ) • É



SCI

SCI-4400-FC-B

SECTION 14. TRANSPORT INFORMATION

UN Number; Proper shipping name; Class(es); Packing group (PG) of the TDG Regulations: UN3267; CORROSIVE LIQUID, BASIC, ORGANIC, N.O.S. Isophoronediamine, 4-nonylphenol, branched); CLASS 8; PG III

UN Number; Proper shipping name; Class(es); Packing group (PG) of the IMDG (maritime): UN3267; CORROSIVE LIQUID, BASIC, ORGANIC, N.O.S. Isophoronediamine, 4-nonylphenol, branched); CLASS 8; PG III; MARINE POLLUTANT

UN Number; Proper shipping name; Class(es); Packing group (PG) of the IATA (air): UN3267; CORROSIVE LIQUID, BASIC, ORGANIC, N.O.S. Isophoronediamine, 4-nonylphenol, branched); CLASS 8; PG III; MARINE POLLUTANT

SECTION 15. REGULATORY INFORMATION

Safety/health Canadian regulations specifics: Refer to section 2 for the appropriate classification. This product has been classified in accordance with the hazard criteria of the Hazardous Products Regulations (HPR).

SECTION 16. OTHER INFORMATION

Date of Preparation	August 2022
Date of Last Revision	August 08, 2024
Revision Indicators	The entire MSDS was changed in August 2020 to be in accordance with the WHMIS 2015 which incorporates the Globally Harmonized System of Classification and Labeling of Chemicals for Canadian Workplaces.
References	1. CHOHS Fact Sheets September 2016 ©CCOHS 2016 2. Supplier's Material Safety Data Sheet(s)
ACGIH	American Conference of Governmental Industrial Hygienists
ATE	Acute toxicity estimate
CAS	Chemical Abstract Service
DSL	Domestic Substance List
IARC	International Agency for Research on Cancer
IATA	International Air Transport Association
IMDG	International Maritime Dangerous Goods Code
LC	Lethal concentration
LD	Lethal Dosage
NIOSH	National Institute for Occupational Safety and Health
NTP	National Toxicology Program (U.S.A.)
OSHA	Occupational Safety and Health Administration (U.S.A.)
PEL	Permissible Exposure Limit
STEL	Short-term Exposure Limit
TDG	Transport of dangerous goods in Canada
TLV	Threshold Limit Value
TSCA	Toxic Substances Control Act
TWA	Time Weighted Average
WHMIS	Workplace Hazardous Materials Information System

NOTICE: The facts stated and the recommendations made with respect to the use of this product are based on liable information. No guarantee of accuracy is made. Before using, determine the suitability of the product's intended use. The purchaser assumes all risks and liability for losses, damage, or expenses, directly or indirectly, arising from the handling or use of the product or from any other cause. All recommendations are made on condition that SCI Coatings Inc will not be liable for any damages resulting from its use since SCI Coatings Inc cannot control the conditions under which the product will be transported, stored, handled or used by the purchaser.

SDS

August 08, 2024
Revision #1

SCI COATINGS • 2821 BOUL. LE CORBUSIER, LAVAL (QC) H7L 4J5

scicoatings.com

page 5 of 5