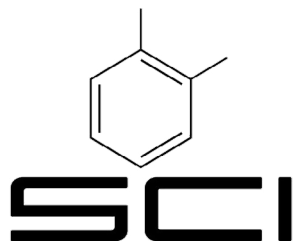


SCI

# Safety data sheet

July 02, 2024  
Revision #1



# SCI-100 M30-B

## SECTION 1. IDENTIFICATION

<b>Product identifier</b>	SCI-100-M30-B
<b>Other Means of Identification</b>	N. A
<b>Recommended Use</b>	Waterproofing Epoxy Membrane
<b>Restrictions on Use</b>	Unknown
<b>Supplier Identifier</b>	SCI COATINGS INC. 2821 Boulevard Le Corbusier Laval, Québec Canada H7L 4J5 www.scicoatings.com
<b>Emergency Phone No.</b>	<b>24-Hour Emergency Telephone Number Canada (CANUTEC): (613) 996-6666</b>

## SECTION 2. HAZARD IDENTIFICATION

### Classification

Acute Toxicity, Oral (Category 4)  
Acute Toxicity, Dermal (Category 5)  
Skin Sensitization (Category 1A)  
Skin Corrosion/Irritation (Category 1B)  
Serious eye damage/irritation (Category 1)  
Reproductive toxicity (Category 2)  
Hazardous to the aquatic environment - acute (Category 1)  
Hazardous to the aquatic environment - chronic (Category 1)

### Label Elements

#### **Signal Word**

Danger

#### **Hazard Statements**

H302 Harmful if swallowed  
H312 Harmful in contact with skin  
H317 May cause an allergic skin reaction  
H314 Causes severe skin burns and eye damage  
H334 May cause allergy or asthma symptoms or breathing difficulties if inhaled  
H335 May cause respiratory irritation  
H360 May cause harm to breast-fed children  
H361 May damage the unborn child. Suspected of damaging fertility  
H400 Very toxic to aquatic life  
H410 Very toxic to aquatic life with long lasting effects

### Precautionary statements

#### **Prevention:**

P201 Obtain special instructions before use. P202 Do not handle until all safety precautions have been read and understood. P210 Keep away from heat/sparks/open flames/hot surfaces. No smoking. P260 Do not breathe the dust or mist. P263 Avoid contact during pregnancy/while nursing. P264 Wash with plenty of water and soap thoroughly after handling. P270 Do not eat, drink or smoke when using this product. P271 Use only outdoors or in a well-ventilated area. P272 Contaminated work clothing should not be allowed out of the workplace. P273 Avoid release to the environment. P280 Wear protective gloves/protective clothing/eye protection/face protection. P284 Wear respiratory protection. P305 + P351 + P338 IF IN EYES: Rinse cautiously with water for several minutes. Remove contact lenses, if present and easy to do so. Continue rinsing. P310 Immediately call a POISON CENTER or doctor/physician. P303 + P361 + P353 IF ON SKIN (or hair): Take off immediately all contaminated clothing. Rinse skin with water/shower. P304 + P341 + P311 IF INHALED: If breathing is difficult, remove to fresh air and keep at rest in a position comfortable for breathing. Call a POISON CENTER or doctor/physician. P301 + P330 + P331 IF SWALLOWED: Rinse mouth. Do NOT induce vomiting. P362 + P364 Take off contaminated clothing and wash before reuse. P370 + P378 In case of fire: Use water spray, dry powder, or foam for extinction. P233 Keep container tightly closed. P405 Store locked up. P501 Dispose of contents/container into safe container in accordance with local, regional or national regulations.

#### **Other Hazards:**

Unknown





# SCI-100 M30-B

## SECTION 3. COMPOSITION

Chemical Name	CAS No.	% concentration
Isophorone diamine	2855-13-2	15 - 50 %
Benzyl alcohol	100-51-6	1 - 10 %
4-nonylphenol, branched	84852-15-3	10 - 30 %
Polyoxypropylene diamine	9046-10-0	20 - 40 %

## SECTION 4. FIRST-AID MEASURES

### First-aid Measures

#### **Inhalation:**

IF INHALED: Remove person to fresh air and keep comfortable for breathing.

#### **Skin Contact:**

Flush with soap and water for a minimum of 15 minutes. Consult a physician if irritation persists or you feel unwell.

#### **Eye Contact:**

Rinse immediately with plenty of water for at least 15 minutes. Consult a physician.

#### **Ingestion:**

Rinse mouth and then drink plenty of water. Do not induce vomiting. Never induce vomiting or give anything by mouth if the victim is unconscious or having convulsions. Immediate medical attention required.

### Most Important Symptoms and Effects, Acute and Delayed

Burning pain and severe corrosive skin damage. Can burn mouth, throat, and stomach. Can cause severe irritation and burns to the respiratory tract. May cause an allergic respiratory reaction. Causes serious eye damage. Symptoms may include stinging, tearing, redness, swelling, and blurred vision. Permanent eye damage including blindness could result.

### Immediate Medical Attention and Special Treatment:

Provide general supportive measures and treat symptomatically. Chemical burns: Flush with water immediately. While flushing, remove clothes which do not adhere to affected area. Call an ambulance. Continue flushing during transport to hospital. Keep victim warm. Keep victim under observation. Symptoms may be delayed.

## SECTION 5. FIRE-FIGHTING MEASURES

### Extinguishing Media

#### **Suitable Extinguishing Media**

In case of fire: water fog, foam, dry chemical powder, carbon dioxide (CO<sub>2</sub>)

#### **Unsuitable Extinguishing Media**

Water jet

### Specific Hazards Arising from the Product

During fire, nitrous gases, fumes/smoke, isocyanates and vapour may be formed.

### Special Protective Equipment and Precautions for Fire-fighters

Self-contained breathing apparatus and turn-out gear must be worn in case of fire.

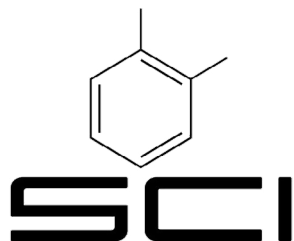
## SECTION 6. ACCIDENTAL RELEASE MEASURES

### Personal Precautions, Protective Equipment, and Emergency Procedures

Clear area. Ensure adequate ventilation. Wear suitable personal protective clothing and equipment.

### Methods and Materials for Containment and Clean up

For containment, ensure adequate ventilation and absorb any spill with inert liquid binding material and dispose of waste safely.



# SCI-100 M30-B

## SECTION 7. HANDLING AND STORAGE

### Precautions for Safe Handling

Provide suitable exhaust ventilation at the processing machines. Ensure thorough ventilation of stores and work areas. Avoid aerosol formation. When handling heated product, vapors of the product should be ventilated and respiratory protection used. Wear respiratory protection when spraying. Danger of bursting when sealed gastight. Protect against moisture. If bulging of drum occurs, transfer to well-ventilated area, puncture to relieve pressure, open vent and let stand for 48 hours before resealing.

### Conditions for Safe Storage

Store in cool dry and well-ventilated place. Keep stored in accordance with local, regional, national, and international regulations. Store away from incompatible materials.

## SECTION 8. EXPOSURE CONTROLS / PERSONAL PROTECTION

### Control Parameters

All protective clothing should be appropriately clean and available to dress into before work. The engineering measures or controls and PPE recommendations are only guidelines and may not apply to every situation. Data not available. For additional information, please consult the corresponding requirements under <http://www.ccohs.ca/topics/hazards/chemical/chemicals/>

Chemical Name	ACGIH® TLV®		OSHA PEL		AIHA® WEEL®	
	TWA	STEL®	TWA	Ceiling	8-hr TWA	Short-term

### Appropriate Engineering Controls

Local exhaust ventilation required. Make up air should be supplied to balance air that is removed by local or general exhaust ventilation. Provide sufficient ventilation to keep vapors below permissible exposure limit. Emergency eye wash fountains and safety showers should be available in the immediate vicinity of any potential exposure. Ensure all national / local regulations are observed.

### Individual Protection Measures

#### **General Measures**

Do not eat, drink or smoke during work. Avoid all contact with skin or eye. If clothing comes into contact with material, do not allow out of the workplace. Clean hands and any exposed skin thoroughly after work and before breaks.

#### **Eye / Face Protection**

Use tightly sealed goggles or safety glasses with side shields which are resistant to Chemicals.

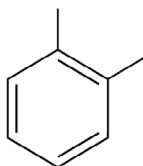
#### **Skin Protection**

Wear chemical resistant protection gloves. Wear impervious clothing as necessary to protect against coming in contact with product.

#### **Respiratory Protection**

If insufficient ventilation, wear respiratory protection.





# SCI-100 M30-B

# SCI

## SECTION 9. PHYSICAL AND CHEMICAL PROPERTIES

Appearance	Clear Liquid
Odor	Not available
Odor threshold	Not available
pH	Not available
Melting Point	Not available
Initial Boiling Point / Range	Not Available
Flash Point	>93°C
Evaporation rate	Not available
Flammability (solid; gas)	Not available
Lower flammable/explosive limit	Not available
Upper flammable/explosive limit	Not available
Vapor pressure	Not available
Vapor density	Not available
Specific gravity	0.9-1.0
Solubility	Partial
Partition coefficient-n-Octanol/water	Not available
Auto-ignition temperature	Not available
Decomposition temperature	Not available

## SECTION 10. STABILITY AND REACTIVITY

Reactivity	Non-reactive
Chemical stability	Stable under recommended handling and storage conditions
Possibility of hazardous reactions	This product will polymerize if mixed with an epoxy resin. Considerable heat can evolve.
Conditions to avoid	Avoid temperatures exceeding the flash point. Epoxy resins under uncontrolled conditions.
Incompatible materials	Strong oxidizing agents and acids.
Hazardous decomposition products	Unknown

## SECTION 11. TOXICOLOGY INFORMATION

Likely Routes of Administration	Inhalation, skin contact, eye contact, ingestion.
Acute Toxicity	Oral: Phenol LD50: 317 mg/kg (rat) Dermal: Harmful in contact with skin LD50: 850 mg/kg
LD50 and LC50 Data	Not available
Skin Corrosion/Irritation	Causes skin irritation.
Serious Eye Damage/ Irritation	Causes serious eye damage
STOT (Specific Target Organ Toxicity)	May cause allergy or asthma symptoms or breathing difficulties if inhaled.
Single Exposure Inhalation	if inhaled.
Aspiration Hazard	Not classified based on available data.
STOT(Specific Target Organ Toxicity)	Skin, eyes, central nervous system, respiratory system
Repeated Exposure	
Respiratory and/or Skin Sensitization	No data
Carcinogenicity	Unknown
Chemical Name	IARC ACGIH® NTP OSHA
Reproductive Toxicity	Not available
Germ Cell Mutagenicity	Not available
Interactive Effects	Not available

## SECTION 12. ECOLOGICAL INFORMATION

Toxic to aquatic life with lasting effects.  
This is not required by WHMIS.  
This is not required by OSHA HCS 2012.

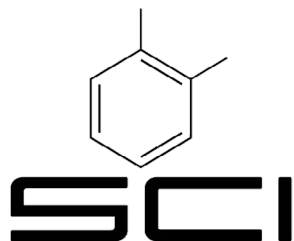
SDS

July 02, 2024  
Revision #1

SCI COATINGS • 2821 BOUL. LE CORBUSIER, LAVAL (QC) H7L 4J5

[scicoatings.com](http://scicoatings.com)

page 4 of 5



# SCI-100 M30-B

<b>SECTION 13. DISPOSAL CONSIDERATIONS</b>	
	<p><b>Disposal Methods</b> Dispose of contents/container into safe container in accordance with local, regional or national regulations.</p>
<b>SECTION 14. TRANSPORT INFORMATION</b>	
	<p><u>UN Number; Proper shipping name; Class(es); Packing group (PG) of the TDG Regulations:</u> UN3267; CORROSIVE LIQUID, BASIC, ORGANIC, N.O.S. Isophorone diamine, 4-nonylphenol, branched); CLASS 8; PG III</p> <p><u>UN Number; Proper shipping name; Class(es); Packing group (PG) of the IMDG (maritime):</u> UN3267; CORROSIVE LIQUID, BASIC, ORGANIC, N.O.S. (. Isophorone diamine, 4-nonylphenol, branched); CLASS 8; PG III; MARINE POLLUTANT</p> <p><u>UN Number; Proper shipping name; Class(es); Packing group (PG) of the IATA (air):</u> UN3267; CORROSIVE LIQUID, BASIC, ORGANIC, N.O.S. Isophorone diamine, 4-nonylphenol, branched); CLASS 8; PG III; MARINE POLLUTANT</p>
<b>SECTION 15. REGULATORY INFORMATION</b>	
	Not required under Canadian Regulations.
<b>SECTION 16. OTHER INFORMATION</b>	
<b>Date of Preparation</b>	August 2022
<b>Date of Last Revision</b>	August 31, 2023
<b>Revision Indicators</b>	The entire MSDS was changed in August 2020 to be in accordance with the WHMIS 2015 which incorporates the Globally Harmonized System of Classification and Labeling of Chemicals for Canadian Workplaces.
<b>References</b>	1. CHOHS Fact Sheets September 2016 ©CCOHS 2016 2. Supplier's Material Safety Data Sheet(s)
ACGIH	American Conference of Governmental Industrial Hygienists
ATE	Acute toxicity estimate
CAS	Chemical Abstract Service
DSL	Domestic Substance List
IARC	International Agency for Research on Cancer
IATA	International Air Transport Association
IMDG	International Maritime Dangerous Goods Code
LC	Lethal concentration
LD	Lethal Dosage
NIOSH	National Institute for Occupational Safety and Health
NTP	National Toxicology Program (U.S.A.)
OSHA	Occupational Safety and Health Administration (U.S.A.)
PEL	Permissible Exposure Limit
STEL	Short-term Exposure Limit
TDG	Transport of dangerous goods in Canada
TLV	Threshold Limit Value
TSCA	Toxic Substances Control Act
TWA	Time Weighted Average
WHMIS	Workplace Hazardous Materials Information System

**NOTICE:** The facts stated and the recommendations made with respect to the use of this product are based on liable information. No guarantee of accuracy is made. Before using, determine the suitability of the product's intended use. The purchaser assumes all risks and liability for losses, damage, or expenses, directly or indirectly, arising from the handling or use of the product or from any other cause. All recommendations are made on condition that SCI Coatings Inc will not be liable for any damages resulting from its use since SCI Coatings Inc cannot control the conditions under which the product will be transported, stored, handled or used by the purchaser.